



---

# EPNVG-18 USER MANUAL



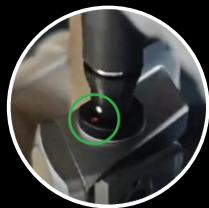
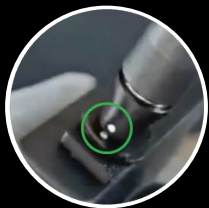
**VIETACTICAL.COM**



## SPECIFICATIONS

Display Screen	4 Square 0.39 inch OLED
Display Resolution	1280×720 - 50Hz - 20ms latency.
Image Sensor	SONY IMX385
Infrared Illuminator	940nm infrared auxiliary lighting
Wide Field of View (FOV)	97° field of view
Waterproof	Rated IP66
Battery Life (Operating)	3 +/- 1 Hours.
Power Source	4 x 3.7V 14500 Batteries
Operating Temperature Range	-15°C to 65°C

# OPERATING INSTRUCTIONS



**1- Power Port:** Connect to the external battery pack (Only use 14500 3.7V Batteries, **DO NOT USE AA BATTERIES**).

**Note:** Make sure the dots on the plugs are align straight to each other before turn on the device. (\*Images)

**2- Power Button:** Push to power ON/OFF the device.

**3 - IR Power Button:** Push to power ON/OFF the IR Lights.

**4 - Image Sensor Lens:** Rotate left or right (<45 Degrees) to adjust the focus.  
**Note:** There are 2 parts of the lens, only adjust the front lens. (\*Images)



# BATTERY PACK INSTRUCTIONS

Modified Battery Pack  
(Last 4 Hours)



Original Battery Pack  
(Last 1 Hour)



## 1. Modified Battery Pack:

- Battery Type: 14500 3.7V

### Important:

- **DO NOT USE AA BATTERIES.**  
- All positive terminals has to face upward.

## 2. Original Battery Pack:

- Battery Type: 16340 3.7V

### Important:

- All positive terminals has to face upward.



# TROUBLESHOOTING

## 1. Device Does Not Power On:

- Ensure that the batteries are fully charged before use.
- Check for any loose or improperly connected cables between the battery pack and the device.

## 2. Blue Screen or Flickering Display

- A blue screen or flickering typically indicates low or depleted battery power.
- Please recharge the batteries or replace the batteries if applicable.



# THANK YOU FOR CHOOSING OUR PRODUCT

We hope you enjoy using your Digital Night Vision Device and that it enhances your outdoor adventures, surveillance tasks, or nighttime exploration.

To ensure optimal performance and longevity, please follow the instructions and safety precautions provided in this manual.

If you have any questions, encounter technical issues, or need further assistance, don't hesitate to reach out to us.

## Customer Support

**Email:** [support@vietactical.com](mailto:support@vietactical.com)

**Website:** [www.vietactical.com](http://www.vietactical.com)

**Working Hours:** Monday – Sunday, 9:00 AM – 10:00 PM